



Windows Password Reset 6.0 User Guide

Contents

Contents.....	1
Introduction.....	2
Instructions on This Manual.....	3
System Requirements.....	4
How to Use Windows Password Reset 6.0.....	5
i. Remove the Password.....	5
ii. Burning Your CD/DVD with BurnCDCC (Optional).....	7
iii. BIOS Settings (Optional).....	9
Help/Troubleshooting.....	10
Customer Support.....	11



Introduction to Windows Password Reset 6.0

Windows Password Reset 6.0 is considered as the best tool to reset local administrator and user passwords on any Windows system. It creates a password recovery CD/DVD, USB Flash Drive for Home users and Businesses. And most of all, it's the most popular and safe solution to reset your Windows password until now. **No need to call a technician, no need to re-install anything, and you certainly don't need to reformat.**



How to Use This Manual

This user manual is to instruct you what is the program, what can it do and how to use it, etc.

Windows Password Reset 6.0 is a software program to remove the Windows passwords for you to login Windows with a blank password. It not only can remove all the users' passwords, but also can remove the administrator's password for you. The **How to Use Windows Password Reset 6.0**, including **Remove the Password**, **Burning Your CD/DVD with BurnCDCC (Optional)** and **BIOS Settings (Optional)**, is the step-by-step guide on how to use the program. **Help/Troubleshooting** and **Customer Support** parts are for you to get help if run into troubles when using the program.



System Requirements

To run **Windows Password Reset 6.0**, the computer must have the following minimum requirements:

- Bootable CD/DVD-ROM drive
- 128MB of RAM
- Windows XP, 2000, 2003, NT or Vista
- Windows must be installed in a FAT-16, FAT-32 or NTFS partition

If you don't already have a Windows Password Reset 6.0 CD/DVD, you'll also need an empty CD/DVD to burn Windows Password Reset 6.0. Instructions to do so are contained in the next sessions.



How to Remove Windows Login Passwords with Windows Password Reset 6.0?

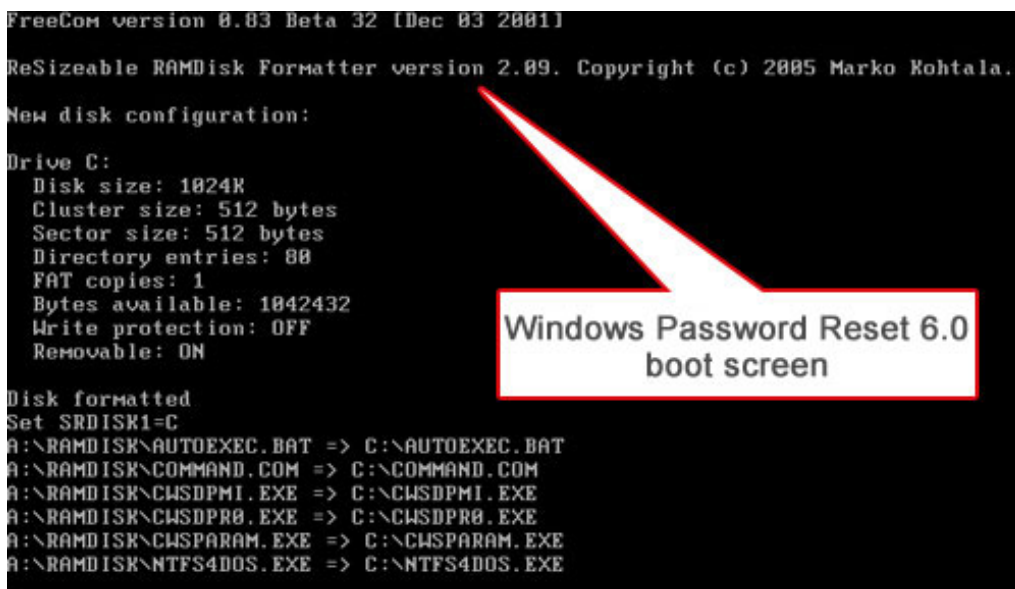
Tips: This HELP file is based on the DEMO version of Windows Password Reset 6.0, which only lists user names but doesn't remove the password. Please buy the full version to remove the password! [Click here to download](#)

Step 1 - Burn the Windows_Password_Reset_6.0.iso onto CD/DVD:

- To burn your CD/DVD, you'll need a blank CD/DVD and a writer.
- If you are familiar with burning *.iso image files, you may use any software you already have, such as Nero, Sonic, Roxio, etc. to burn the Windows_Password_Reset_6.0.iso onto CD/DVD.
- If you are new to CD/DVD burning, then use the BurnCDCC program following with the guide below: [Click here to learn how to burn CD/DVD using BurnCDCC.exe.](#)

Step 2 - Remove your Windows login passwords:

- Insert the newly created CD/DVD in the CD/DVD drive and reboot your computer.
- When the CD/DVD boots, you'll see Windows Password Reset 6.0 initializing (see screenshot below). If so, continue to the next step. If the computer still boots from Windows, it's necessary to change your computer's Setup to make it boot from CD/DVD. [You can find more information about this on our BIOS page here.](#)



Windows Password Reset 6.0
boot screen

- Enter the ID number of the drive that Windows is installed.

```

Windows Password Reset 6.0
http://www.resetwindowspassword.com

STEP 1: Location selection
Please select Windows installation to be processed

ID      Path
-----
1       C:\WINDOWS

Please enter your selection 1..1 or 0 to quit:1_

```

Choose the Windows installation

- Enter the ID number of the user name whose password you are to remove, and hit "Enter".

```

STEP 2: Select User Name
Here are the user names detected in Windows:

ID      User Name
-----
1       Administrator
2       Guest
3       HelpAssistant
4       SUPPORT_388945a8

Please enter your selection 1..4 or 0 to quit:1_

```

Choose one of the users

- Type "y" to confirm your action, and hit "Enter" to reset the password.

```

STEP 3: Confirmation
You are about to reset the password of 'Administrator'.
Are you sure?(y/n)y_

```

Enter 'y' to reset the password

- Enter "y" to continue to reset passwords for other user accounts, enter "n" to finish. Remove the Windows Password Reset 6.0 bootable media from your computer and press any key to restart the computer. Now you can login Windows with an empty password (with no password).

```

Password of 'Administrator' reset.
Reset Password for another account?(y/n)n

Your computer will be restarted.
Please remove the Windows Password Reset 6.0 bootable media and press any key to
restart.
-

```



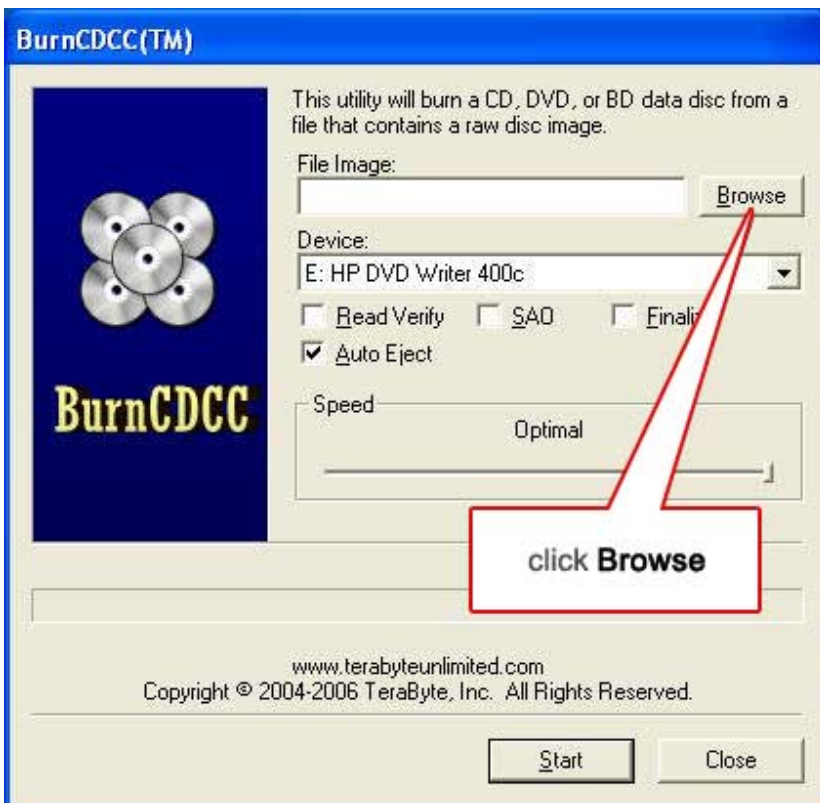
How to Burn Windows Password Reset 6.0 CD/DVD with BurnCDCC?

If you have installed BurnCDCC on your computer, please follow the guide below. If not, click [here](#) to download and install it on your computer.

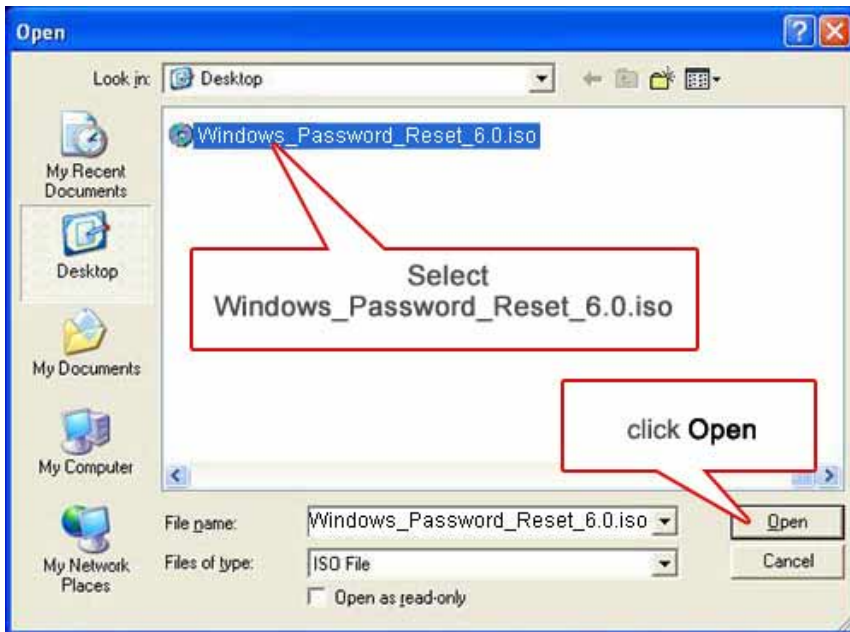
1). Run BurnCDCC by double-clicking on **BurnCDCC.exe**. If the window below appears, click "**Run**".



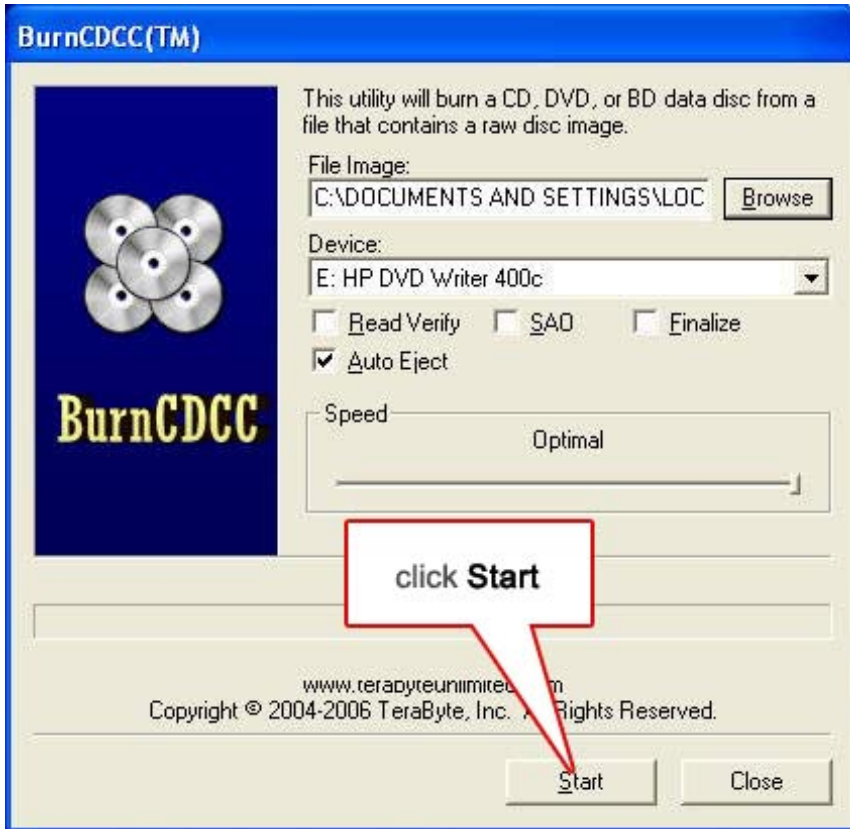
2). In the main window, click "**Browse**".



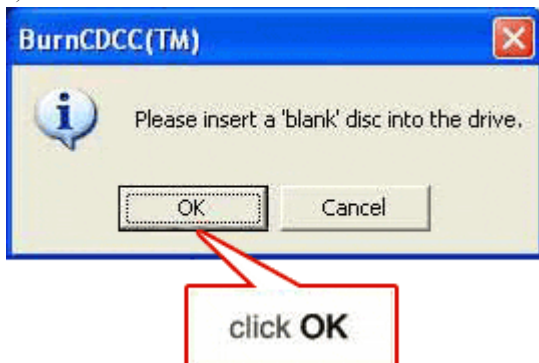
3). In the **Open** window, locate **Windows_Password_Reset_6.0.iso**, select it and click "**Open**" to get back to the main window.



4). In the main window, click "Start".



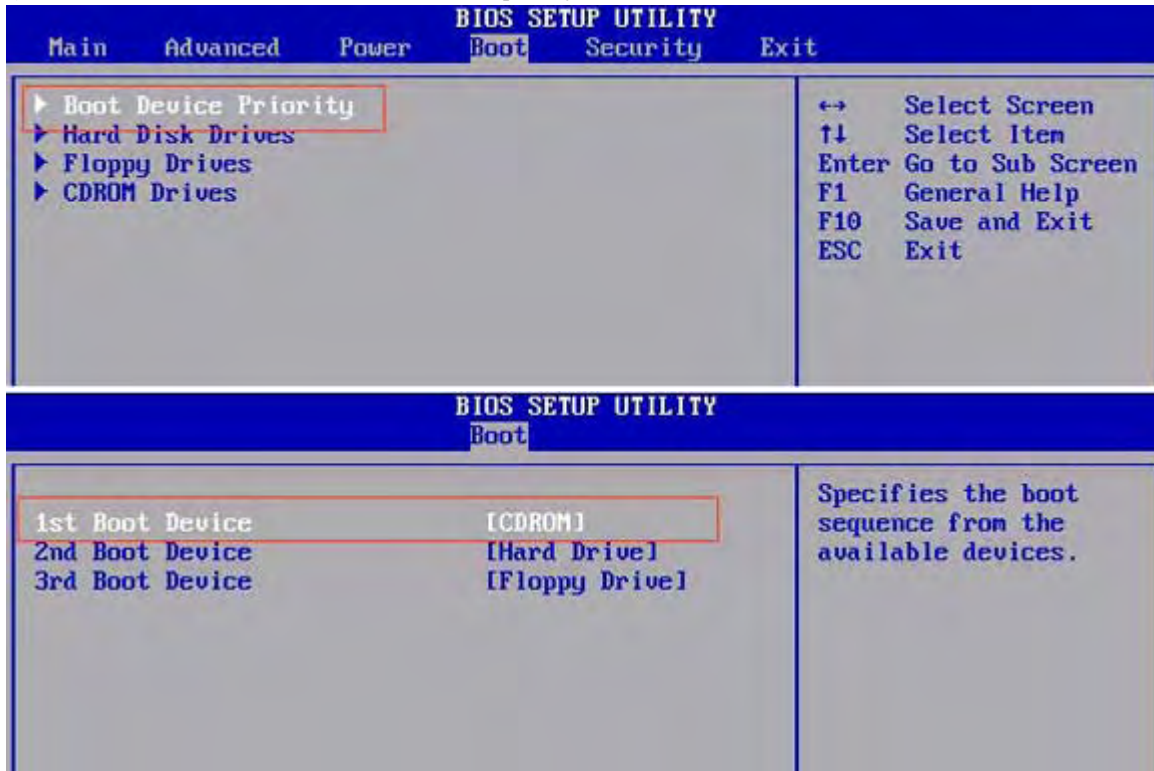
5). Insert the blank CD/DVD in the drive and click "OK". A few seconds later, your CD/DVD will be created and is ready for use.





How to Set to Boot the Computer from CDROM Drive in BIOS?

- 1). Please reboot your computer and press "F2" or "Delete" to enter your BIOS Setup.
- 2). On the "Advanced" or "Boot" Tab, set the boot priority. Make sure the CDROM Drives is before Hard Disk Drives.



- 3). Press "F10" and "Y" followed by "Enter" to save the new BIOS settings and reboot your computer.

[Click to Go Back to How to Use Windows Password Reset 6.0](#)



Help/Troubleshooting

Question: I'm resetting my password using Windows Password Reset 6.0 but still can't log into Windows. What's wrong?

- Are you using the DEMO version? If so, unfortunately, the DEMO version doesn't remove the password, you have to use the full version to try again.
- Leave the password field empty when logging in and try again.
- Make sure you are resetting the correct password. With Windows XP, Administrator is usually not the username you log in with.

Question: I'm sure I'm choosing the right user but still can't login to Windows.

- If resetting the Administrator password for Windows XP, you probably need to log in via **Safe Mode**, as in Windows XP the Administrator is only visible on the Welcome screen when no other user accounts exist (except the guest account) or when you start computer in **Safe Mode**. Tap the **F8** key while booting into Windows to access **Safe Mode**.



Customer Support

If you have problems running Windows Password Reset 6.0, please [contact us](#) and we will be glad in assisting you.

<http://www.resetwindowpassword.com>